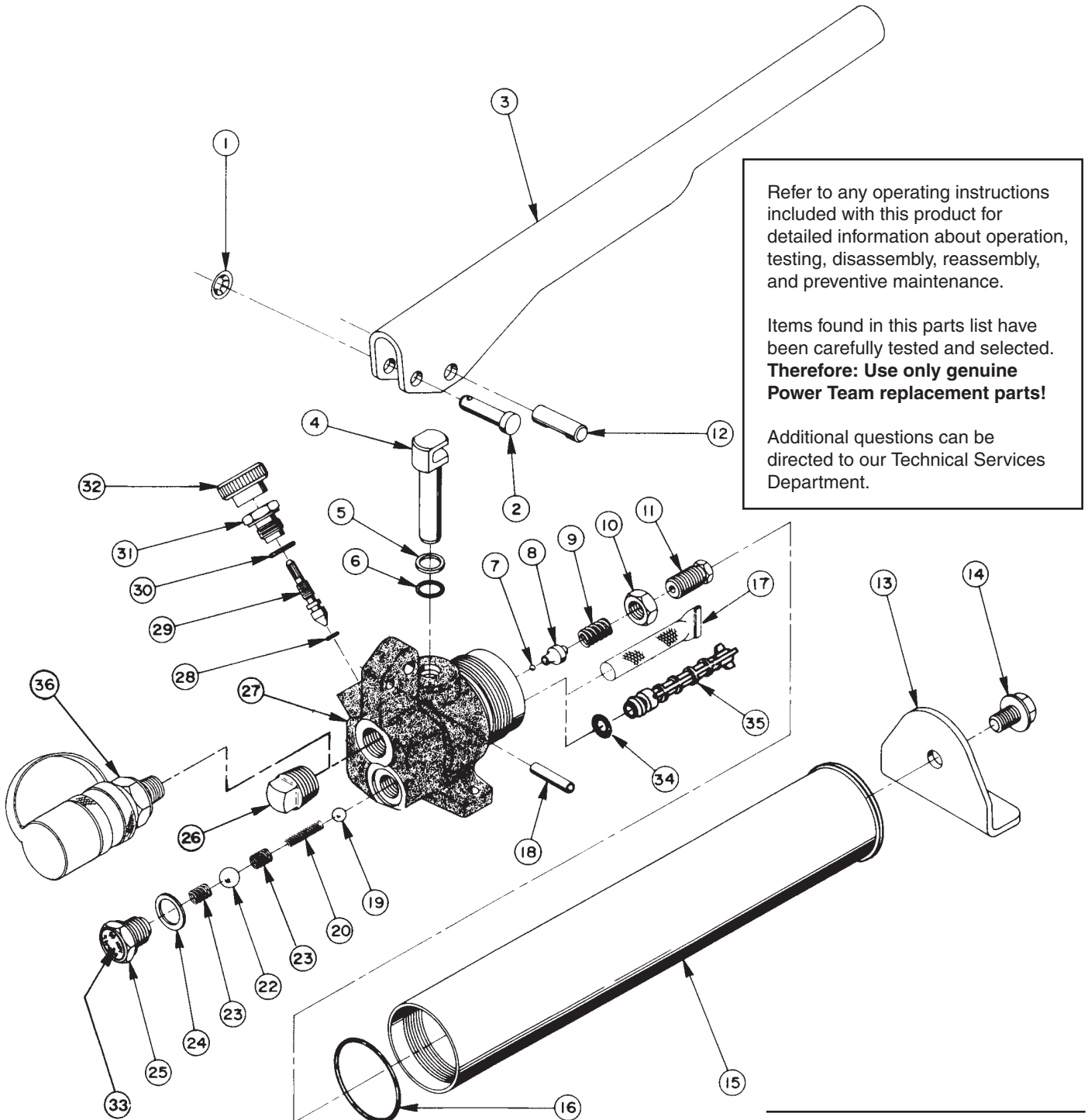


Parts List for:

201338-TID	P12-DEF	P12-SML
KMT420209	P12-DEF-11	P12-SR
P12	P12-G	P12-VAN
P12-ADDCO	P12P	P12-2000
P12-CMI	P12-PFAFF	P12-3000
	P12-SAUER	Y20

SINGLE-STAGE HYDRAULIC HAND PUMP



Refer to any operating instructions included with this product for detailed information about operation, testing, disassembly, reassembly, and preventive maintenance.

Items found in this parts list have been carefully tested and selected. **Therefore: Use only genuine Power Team replacement parts!**

Additional questions can be directed to our Technical Services Department.

Parts List, Form No. 100459, Back sheet 1 of 2

Item No.	Part No.	No. Req'd	Description
1	*15390	1	Speed Nut
2	*15294	1	Clevis Pin
3	34918WH2	1	Handle (For Y20, P12-PFAFF, P12-2000, P12-3000 & P12-DEF)
	34918BL2	1	Handle (For P12-SAUER)
	34918OR9	1	Handle (For P12, P12P, P12-ADDCO, P12-VAN, P12-SML & P12-G)
	34918BK2	1	Handle (For 201338-TID & P12-CMI)
	34918BK7	1	Handle (For P12-DEF)
	34918BL9	1	Handle (For KMT420209)
	34918GY14	1	Handle (For P12-SR)
4	34877	1	Piston
5	†*250611	1	Backup Washer (1/2 x 3/8 x 1/16)
6	*15279	1	O-ring (1/2 x 3/8 x 1/16)
	†19775	1	O-ring (1/2 x 3/8 x 1/16)
7	*14443	1	Steel Ball (3/32 dia.)
8	29785	1	Ball Retainer
9	*14475	1	Compression Spring (5/16 O.D. x 5/8 Lg.; For all P12 series pumps with a relief valve pressure setting <u>greater</u> than 2,500 PSI)
	*11221	1	Compression Spring (.24 OD x 1.00 x .05 ws; For P12-ADDCO, P12-SR, P12-2000, and other pumps with a relief valve setting of 2,500 PSI or less except P12P [see below])
	12195	1	Compression Spring (1/4 O.D. x 1/2 Lg; for P12P only)
	14319	1	Copper Washer (NOT SHOWN; used with #12195; 5/16 x 3/16 x 1/32; for P12P only)
10	10386	1	Hex Jam Nut (3/8-24 UNF)
11	29786	1	Adjusting Nut
12	29787	1	Wrist Pin
13	34876	1	Reservoir Leg (All models except P12-CMI, P12-2000, P12-SAUER, 201338-TID & P12-DEF)
	350285	1	Reservoir Leg (For P12-CMI only)
	34876-1	1	Reservoir Leg (For P12-SAUER, P12-PFAFF, P12-SR & P12-DEF)
	350638	1	Reservoir Leg (For P12-VAN)
14	15273	1	Hex Hd. Cap Screw (Torque to 60/80 in. lbs.)
	17147	1	Hex Hd. Cap Screw (For P12-ADDCO, P12-2000, P12-3000 & P12-VAN; Torque to 60/80 in. lbs.)
15	34875	1	Reservoir Tube Ass'y (All models except KMT420209, P12-CMI, 201338-TID, & P12-DEF)
	253312	1	Reservoir Assembly (For P12-DEF)
	350440	1	Reservoir Assembly (For 201338-TID)
	351338	1	Reservoir Assembly (For P12-VAN)
	309724WH2	1	Reservoir Assembly (For P12-ADDCO, P12-2000 & P12-3000)
	35381	1	Reservoir Tube Ass'y (for KMT420209)
	-----	1	Reservoir Tube Ass'y (For P12-CMI; Special - See NOTE on sheet 2 of 2)
16	*14875	1	O-ring (1-5/8 x 1-1/2 x 1/16)
	†18983	1	O-ring (1-5/8 x 1-1/2 x 1/16)
17	*24789	1	Screen Filter (On pumps manufactured before 7-1-90)
18	*10549	1	Roll Pin (3/16 dia. x 7/8 Lg.; For pumps manufactured before 7-10-92)
	*11916	1	Roll Pin (1/4 dia. x 7/8 Lg.; For all pumps manufactured after 7-10-92)
19	*10375	1	Steel Ball (1/4 dia.)
20	*10445	1	Compression Spring (5/32 O.D. x 3/4 Lg.)
22	*10378	1	Steel Ball (3/8 dia.)

Continued -

Item No.	Part No.	No. Req'd	Description
23	*10444	2	Compression Spring (3/16 I.D. x 13/32 Lg.)
24	*14874	1	Soft Copper Washer (.700 x 1/2 x 1/32 thk.)
25	351952	1	Valve Screw (Torque to 30/35 ft. lbs.)
26	11127	1	Pipe Plug (3/8 NPTF)
27	50632	1	Pump Body (Includes Item 18; For all models except P12-CMI & P12-VAN)
	64199	1	Pump Body (For P12-CMI & P12-VAN)
28	*10265	1	O-ring (5/16 x 3/16 x 1/16)
	†11437	1	O-ring (5/16 x 3/16 x 1/16)
29	29783	1	Stem
30	*10300	1	O-ring (5/8 x 15/32 x 5/64)
	†19091	1	O-ring (5/8 x 15/32 x 5/64)
31	34871	1	Guide
32	29827	1	Knob
33	215907	1	Decal ("DO NOT REMOVE")
34	*12557	1	O-ring (11/32 x 7/32 x 1/16)
	†18973	1	O-ring (11/32 x 7/32 x 1/16)
35	*215075	1	Screen Filter
36	9796	1	Ram Half Coupler w/ Dust Cap (for KMT420209)

} On pumps
manufactured
after 7-1-90

PARTS INCLUDED BUT NOT SHOWN

	16116	1	Patent Decal
	14880	1	Oil Level & Instr. Decal (for Y20)
	†205724	1	Viton Seal Decal
	*307329	1	Oil Level & Warning Decal (for 201338-TID, P12, P12P, P12-CMI, P12-PFAFF, P12-2000, P12-SAUER, P12-VAN, P12-SML, P12-SR, P12-DEF & P12-G)
	307329-CE	1	Oil Level & Warning Decal (For P12-SAUER)
	16710	1	Warning Decal (for 201338-TID)
	307330	1	Trade Name Decal (for P12 & P12P)
	16205	1	Trade Name Decal (for 201338-TID)
	KMT250376	1	Trade Name Decal (for KMT420209)
	252023	1	Trade Name Decal (for P12-PFAFF)
	11610	1	Handle Grip (for P12-CMI)
	10302	1	O-ring (3/4 x 5/8 x 1/16; for P12-CMI)
	250594	1	Cap Fitting (37° flare; for P12-CMI)
	250605	1	90° Elbow Fitting (for P12-CMI)
	251123	1	Nut, Hex-Jam (for P12-VAN)
	253234	1	Oil Pivot Pins Decal
	304501	1	Pump Guard (For P12-G)

Part numbers marked with an asterisk (*) are contained in Standard Repair Kit No. 300260.

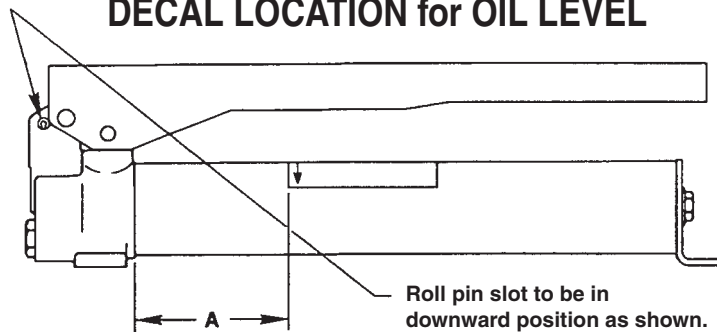
Part numbers marked with a dagger (†) are contained in Viton Seal Kit No. 300507.

NOTE: Consult the manufacturer when ordering a reservoir for pump model P12-CMI.

RELIEF VALVE SETTING

Catalog Number	Relief Valve Setting
P12, Y20, 201338-TID, KMT420409, P12-CMI, P12-PFAFF, P12-SAUER, P12-G	10,000 PSI
P12-SML	7,250 PSI
P12-DEF	3,800 PSI
P12-3000, P12-VAN	3,000 PSI
P12-ADDCO, P12-2000	2,000 PSI
P12-SR	1,100 PSI
P12-P	1,000 PSI

DECAL LOCATION for OIL LEVEL



Catalog Number	Decal #	Dimension "A"
Y20	14880	3-3/32"
P12, P12-SAUER, 201338-TID, P12-PFAFF, KMT420209, P12-2000, P12-SML, P12-SR, P12-DEF, P12-G	307329	1/2"

Models P12-CMI, P12-P & P12-VAN use the warning portion of decal #307329. The fill information and relief valve information must be trimmed off.